

Telephone booth lifting column
JS36H5



TECHNOLOGY
DRIVES INTELLIGENT LIFE

Data sheet

JS36H5

JS36H5 is a new type of lifting column, suitable for office, home and commercial Innovative shape to match different application scenarios (can be hidden in the wall, saving space) (space-saving) equipped with backward function when encountered, safe lifting.



Features

- Single max. self-lock: 500N
- Noise level: $\leq 53\text{dB}$
- No load & load stabilization speed 30mm/s
- Dimension: 879*102*50
- Ltinrary: 500mm
- Outer tube size: 102*50*2
- Surface: powder coating, three standard color: white, black, gray. (Optional)

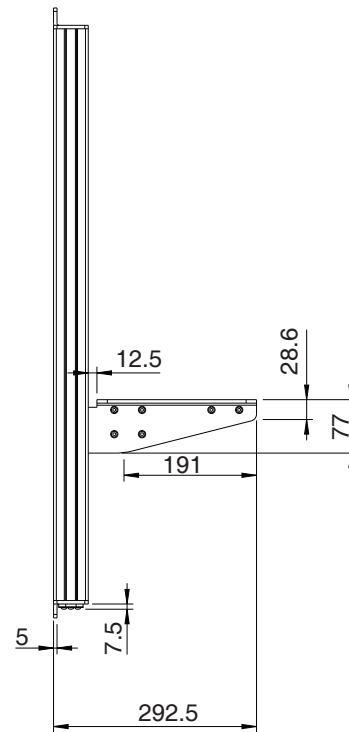
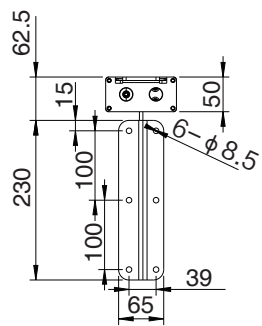
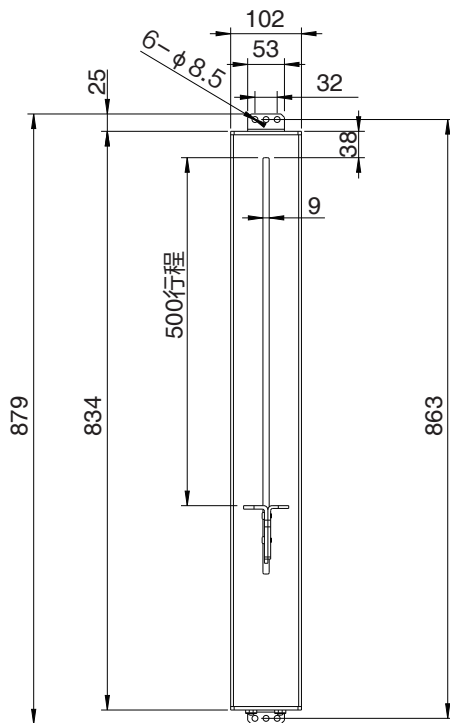
Usages

- 2 lifting columns synchronous operation; can also be a lifting column alone (single operation, the use of the matching table board should not exceed 600 * 400. 2 lifting columns synchronous operation when the table should not exceed 1200 * 600).
- Matching control box: JCB36N1, JCB36N2A
- Work system: 10%; work 2 minutes rest 18 minutes
- Use environment: indoor
- Storage and transport temperature: -10 ° C + 70 ° C

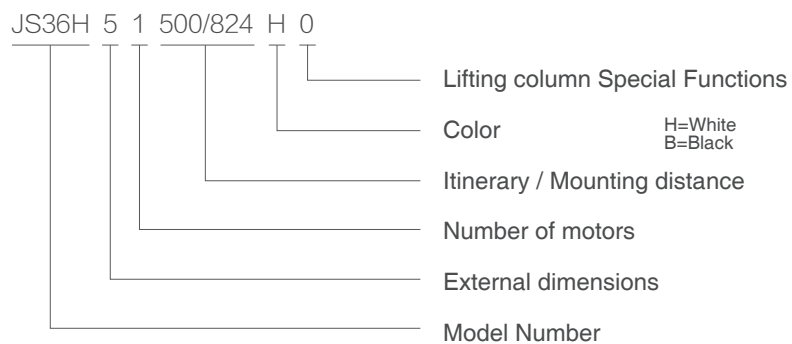
Technical specifications

Type	Load (N)	Self-lock force (N)	Rated load current (A)	Maximum Speed No load ~ Rated load(mm/s)	Work system	Lead screw thread pitch (mm)	Stroke length (mm)	Built-in length (mm)
JS36H5	500	500	7.5	30	10%	16	500	824

Dimensions



Ordering Key



Load Curve Chart

Specific chart needs to be provided by electronic testing after the application process, the following chart is for reference only

